



Waterside

Rated '5 – Very Good' by the Care Inspectorate, Waterside is set within a town in North Ayrshire. Waterside has two living arrangements available consisting of five bedrooms in the main house and a single service on the premises for children and young people aged 8 to 18 years. The service has a range of communal areas and benefits from a large garden, with stables and a chicken coop.

Waterside offers a unique farm life experience that allows residents to sample a wider caring environment, whilst also placing a particular emphasis on engaging with trauma of failed attachment.



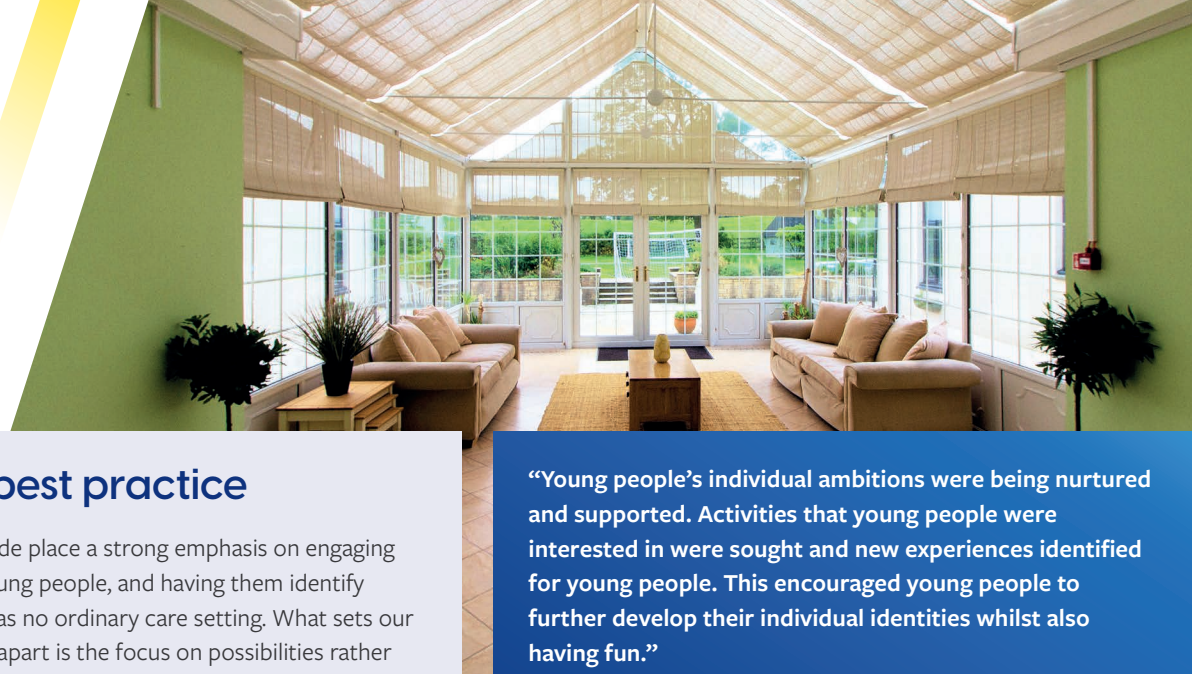
Supporting the needs of the young people

At Waterside, we support children and young people with trauma and adverse childhood experiences, as well as additional support needs. This includes an autistic spectrum disorder (ASD), pathological demand avoidance (PDA), social, emotional and mental health (SEMH) needs and child sexual exploitation (CSE).

Young people suffering from failed attachment will find sanctuary and healing within this warm and impressively furnished setting. The therapies available at Waterside also offer an engaging learning and living environment for children and young people. Individuals experiencing issues of anxiety and trauma, as well as resulting social and emotional behaviours, may benefit from the independent living setting available, which also allows for structured peer engagement on the grounds.

The family environment, routines and strategies are in line with what works best for individual young people. The staff ratios also reflect the needs of the young people, offering 1:1 and 2:1 support, and a 24-hour waking service.

Young people supported at Waterside have access to specialist education services provided by Radio City School, which is part of Aspris Children's Services. We also have strong links with other local mainstream and specialist external education provisions.



Providing best practice

Our team at Waterside place a strong emphasis on engaging with children and young people, and having them identify their living situation as no ordinary care setting. What sets our practice at the farm apart is the focus on possibilities rather than limitations, in order to foster empowerment.

A core practice at Waterside is role modelling, to encourage positive interactions in tackling issues, resilience and social engagement. Our team are skilled and experienced in providing positive transitions for young people from previous placements, through careful and inclusive planning.

“Young people’s individual ambitions were being nurtured and supported. Activities that young people were interested in were sought and new experiences identified for young people. This encouraged young people to further develop their individual identities whilst also having fun.”

Care Inspectorate

Achieving positive outcomes

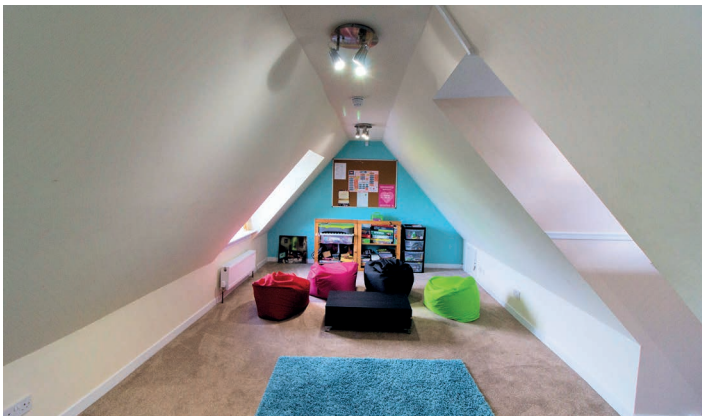
Young people who have resided at Waterside have successfully enjoyed long term placements, where they have faced their significant social and emotional barriers to group integration.

A range of activities

The spacious grounds at Waterside offer considerable opportunities for social and peer engagement and the chicken coop, stables and fishing pond on-site, promotes both individual and group activities that will contribute to the achievement of positive outcomes.

Activities in the area include:

- Swimming, trampolining and dry slope skiing
- Camping and BBQs
- Water sports at Castle Semple
- Heads of Ayr Farm Park
- Kilwinning Sports Club
- Laserquest, bowling and go-karting
- Bike rides around the local cycle paths
- Whitelee Windfarms



Contact us

For more information on Waterside in North Ayrshire, please contact us today.

Call: 0330 056 4467

Email: placements@aspris.com

Website: www.aspris.co.uk

Aspris Care