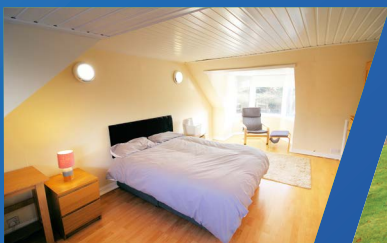




Dovecote Hall Cottage

Rated '5 - Very Good' by the Care Inspectorate, Dovecote Hall Cottage is located on the outskirts of a large town in North Ayrshire. The charming former toll house is situated within semi-rural agricultural land. The service offers comfortable and scenic accommodation, including an annexe for more independent living. The main house is an ideal setting for a solo placement or sibling group aged 8 to 18 years with a range of needs.



Supporting the needs of the young people

At Dovecote Hall Cottage, we support children and young people with trauma and adverse childhood experiences, as well as additional support needs. This includes an autistic spectrum disorder (ASD), pathological demand avoidance (PDA), social, emotional and mental health (SEMH) needs and child sexual exploitation (CSE).

The staff ratios reflect the needs of the young people, with the service offering 1:1 and 2:1 support, and includes a 24-hour waking service. Where required, we can also provide supported living to individuals via our satellite flat, as part of pathways planning.

Young people supported at Dovecote Hall Cottage have access to specialist education services provided by Radio City School, which is part of Aspris Children's Services. We also have strong links with other local mainstream and specialist external education provisions.

Providing best practice

We promote the safety and wellbeing of all children, young people and staff. GIRFEC is at the core of our work. There is an emphasis on the clear roles and responsibilities of the child, young person and staff worker, to establish a safe and therapeutic environment.

Embedded within our work at Dovecote Hall Cottage, is a commitment to an 'outcomes' approach in meeting needs. Central to this are our approaches to assessment, which are the cornerstones of our work. We are committed to our 'one team' ethos and promote safety, wellbeing and opportunity for our children, young people and staff.



“Social Workers and parents to the young people confirmed that the young people had made significant progress during their time in Dovecote. They commented on the additional effort that staff had made to ensure they understood the young people’s needs.”

Care Inspectorate

“Young people told us of the positive relationships they have with staff and we observed good natured and engaging interaction between the young people and staff.”

Care Inspectorate



A range of activities

The external environment at Dovecote Hall Cottage is utilised to maximise opportunities for early interventions, which can assist residents in leading rich and fulfilling lives. The staff team provide a structure that ensures young people undertake normal daily routines and are encouraged to become as independent as possible, in terms of sleep patterns, personal hygiene, dressing, attending school, cooking and shopping.

The external environment provides a range of learning opportunities and staff have gained recognition for their inclusive approach.

Local activities include:

- A snooker club
- Greenacres Riding Stables
- Magnum Centre with swimming, badminton, short tennis and fitness facilities
- Army Cadets
- Galleon Leisure Centre with 5-a-side football, badminton, a sauna, swimming, ice skating and ice hockey
- Dean Castle & Country Park
- The Garage Leisure Complex



Contact us

For more information on Dovecote Hall Cottage in North Ayrshire, please contact us today.

Call: 0330 056 4467

Email: placements@aspris.com

Website: www.aspris.co.uk

Aspris Care